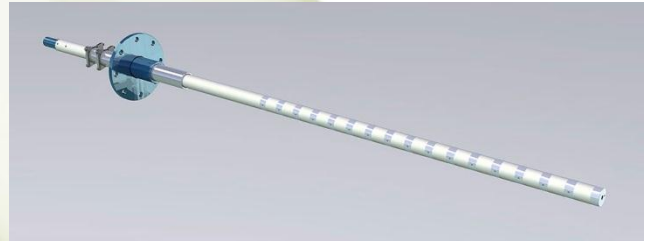


## CoreHydra – Bed Level Watch

Bed Level Watch is a monitoring tool that offers an insight into different phases in a process tank. For the first time you can really see inside to the process tank and visualize different phases.

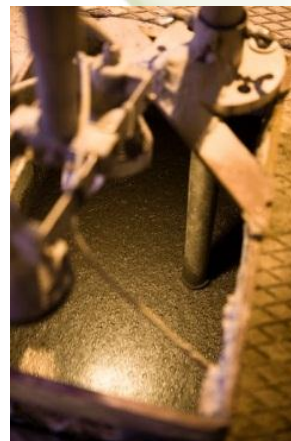
## INSIGHT INTO YOUR PROCESS



Numcore's sensor technique is based on 3D-machine vision.

## Benefits

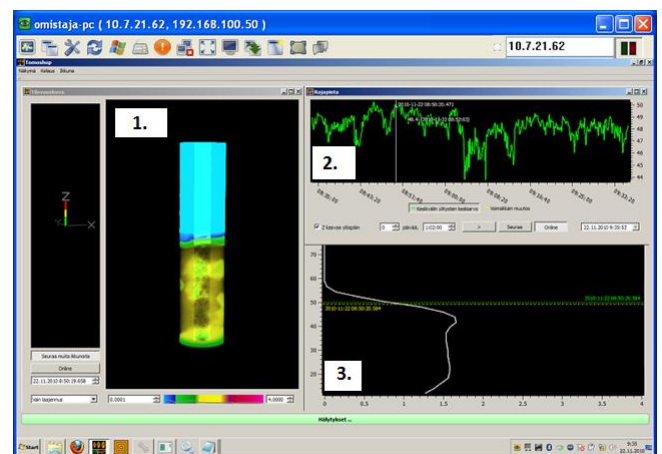
- Monitor the thickness of different layers in a process tank
- Interface detection in large tanks
- Monitor the change of conductivity in layers
- On-line control of the boundary between phases
- Savings in downtime costs
- Reduced chemical consumption



Numcore's CoreHydra installation in froth flotation process.

## Case example

Mineral processing plant in Finland chose Numcore's CoreHydra sensor in order to measure the thickness of the froth bed on-line. The target at the plant is to avoid unpredictable froth bed collapses that occurred on an irregular basis. CoreHydra now enables forecasting a collapse 60 minutes beforehand leading into significant cost savings.

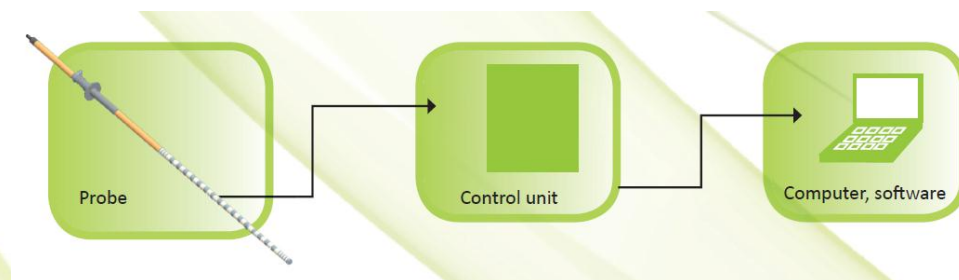


Data information obtained with Numcore's CoreHydra sensor from froth flotation process. 1. Froth bed-Slurry interface, 2. On-line changes in the boundary, 3. Conductivity distribution.

<b><u>MECHANICAL</u></b>	
Probe length	1-10 m / 3-30' (standard 3 m / 10')
Process temperature range	Max 100° C / 212° F
Probe materials	Stainless steel (AISI 316), PVC, fiberglass, ceramics Other materials also available on request
Number of electrodes	22
IP protection	IP65
<b><u>ELECTRICAL</u></b>	
AC power input	100-240V ~ 50/60 Hz
Power consumption	<150W
<b><u>COMMUNICATION INTERFACES</u></b>	
Ethernet connection	IEEE 802.3u
Current output	4..20 mA (passive) Requires external 24 V supply
Other communication interfaces available on request	

### CoreHydra– Typical delivery

CoreHydra, Control unit, Computer, software



**Numcore Ltd is a Finnish supplier of high-tech process control instruments.**

Fields of specialization include electronics and computational imaging. The company is privately held and is located in Kuopio, Finland.

All of Numcore's products have CE marking and are manufactured according to the highest standards.

Numcore also provides support and troubleshooting services.

