

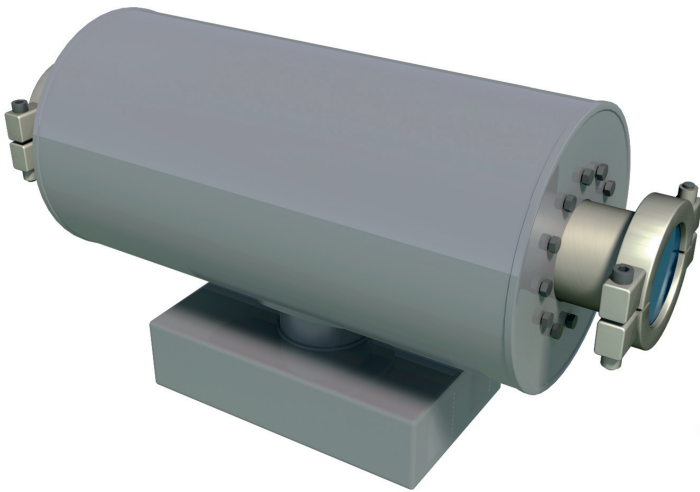
Numcore Testing & Troubleshooting Service



Do you really understand the dynamics inside your pipes and vessels?

INSIGHT INTO YOUR PROCESS

Numcore testing and troubleshooting services are the ideal solution for a systematic view into your process. For the first time you really see what is happening and react based on the observations.



The CoreApus is a pipe-mounted process flow imaging instrument. See the homogeneity of the process material and calculate the exact mass flow.



The CoreHydra is a probe instrument that enables viewing separate phases and material changes within your vessel.

Benefits

- A risk-free way to study your process – Learn more by testing
- Do a trial and verify the benefits before purchasing a system
- No delays – A test typically takes one working week + reporting
- Numcore provides a brief and readable report of the testing and possible suggestions from the instrumentation point of view

Case

A Finnish cheese producer sought to improve the control of their cheese molding process which failed to produce cheeses of equal weight. Numcore was subsequently assigned to do a test in which a CoreApus tube sensor was installed in the process pipe. The outcome was no less than commissioning the CoreApus as an instrument to calculate the cheese mass flow resulting in equal weight cheeses and vast annual savings.

Delivery specifications



Standard delivery includes:

- A dedicated contact person at Numcore
- Rental of a standard CoreApus tube sensor (Pipe diameter x length: 50 mm, 100, 125 mm, 250 mm x 800 mm -> 600mm) or **CoreHydra** probe (max. length 4 m) + control unit + computer
- Commissioning of the sensor
- Monitoring and troubleshooting
- Brief and clear reporting of the process: suggestions and observations
- Numcore management visit on site
- Improvement and development discussions with your staff

Customer requirements:

- A filled-out process description form supplied by Numcore. The form contains the initial process information including temperatures, pressures and other process conditions. Numcore keeps to right to cancel the process if there is any risk of safety of the measurement.
- Required mechanical pipe or vessel preparations to fit the sensor. Drawings delivered by Numcore
- Installation of Numcore sensor. Installation instructions delivered by Numcore
- Electrical feed supply 230V (10A), European socket or directly wired to terminal
- Continuous support/interest during the process monitoring

Pricing

Item	Price* (0% VAT) EXW Kuopio Finland
Standard CoreApus**	1000 € /week - On site
Standard CoreHydra	500 € /week - On site
Courier costs	Based on invoice + 10% invoicing fee
Engineer travels	Based on occurred travel costs + 10% invoicing fee
Engineer time	1000€/day - On site
Engineer travel time	500 € / day

*excluding VAT

**For a custom-sized instrument please contact Numcore Ltd for a quote

Numcore Ltd is a Finnish supplier of high-tech process control instruments.

Fields of specialization include electronics and computational imaging. The company is privately held and is located in Kuopio, Finland.

All of Numcore's products have CE marking and are manufactured according to the highest standards.

Numcore also provides support and troubleshooting services.



Address:

Microkatu 1
P.O.BOX 1199
70211 Kuopio, Finland

Contacts:

Tel: +358 400 287 383
www.numcore.com